

NF Fleet Return inspection guide

Utility vehicles

All good things must eventually come to an end, and that also goes for leasing arrangements. We've put together a guide for returning vehicles. All vehicles leased from NF Fleet undergo a return inspection. Inspections are conducted by an impartial, outside firm. The same return inspection process is used for each and every vehicle.

In a return inspection, the inspector

- Examines the vehicle inside and out
- Takes photos of the vehicle
- Documents the inspection
- Makes a note of any items requiring repair
- If possible, provides an estimate of the repair costs
- If necessary, provides advice on how to fill out an accident report

If the inspection reveals a need for repair work, it will be performed as cost-effectively as possible, taking the vehicle age and mileage into consideration. For example, small dents are smoothed out using methods that won't damage the finish.

The return inspection is documented and damages are photographed. A completed return inspection form, which lists any missing items and/or damages, is sent to the customer by email.

Example photos

These example photos provide an idea of the criteria for return inspections. The photos are indicative.

Tyres and rims

Acceptable damage to tyres and rims

- Scratches
- Small scrapes and scuffs
- Damaged clearcoat or paint finish

Unacceptable damage to tyres and rims

- Extensive scrapes and scuffs
- Cracks
- Deformations
- Incorrect rims
- Incorrect tyres
- Damaged tyres



Body and coat of paint

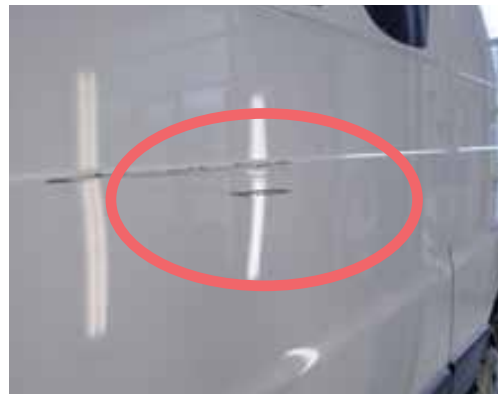
Acceptable damage to the body or the coat of paint of the vehicle

- Small stone chips on the front of the vehicle
- Scratches and scrapes around the door handles
- Individual and intact (paint) dents no larger than 2 cm in diameter
- Scrapes and scuffs in the finish caused by car washes
- Fading of the paint finish
- Rust damage



Unacceptable damage to the body or the coat of paint of the vehicle

- Dents larger than 2 cm in diameter, whether or not the paint is intact
- Unrepaired collision damage and unprofessional repairs made to the vehicle
- Damages to the paint finish that require repainting
- The removal of tape and stickers
- Damages caused by roof racks
- Rust damage originating from dents and scratches



Bumpers of the vehicle

Acceptable damage to the bumpers

- Small scratches on the bumpers, with no deformities
- Small scratches and scrapes on the door edges
- Small cracks in the bumpers



Unacceptable damage to the bumpers

- Noticeable scratches on the trim and bumpers
- Cracks in the bumpers



Mirrors

Acceptable damage to the mirrors

- Small scratches on the mirrors and mirror housings



Unacceptable damage to the mirrors

- Cracks in the mirrors and mirror housings
- Broken mirrors and mirror housings



Windshield and lamps

Acceptable damage to the glasswork

- Small cracks in the rear tail lights
- Scratches on the headlights
- Small, intact (no cracking) stone chips in the wind-screen



Unacceptable damage to the glasswork

- Cracks in the headlights
- Broken headlights
- Cracks and 'bullseye' chips in the windscreen and other glass



Interior

Acceptable damage to the interior

- Fading
- Scrapes
- Normal soiling (wear and tear)



Unacceptable damage to the interior

- Hard-to-remove stains
- Holes and tears
- Deep soiling and unpleasant odours
- Animal fur/hair (requiring re-upholstering)



Cargo space

Acceptable damage in the cargo space

- Scratches and small cracks in the bed liner
- Scratches on the wheel wells
- Scratches and scrapes on the partition



Unacceptable damage to the cargo space

- Holes and cracks in the bed liner
- Dents in the wheel wells
- Cracks and dents in the partition
- Damage that prevent use of the bed and demountables



Traces of removed accessories

Acceptable damage caused by removed accessories

- A small screw hole that cannot be seen is left after removing an accessory

Unacceptable damage caused by removed accessories

- Modifications that cannot be restored to the original state
- Screw holes in the cab or instrument panel that are visible and cannot be concealed

Unreturned miscellaneous

Unacceptable shortcomings

- Tyres other than the original
- Any lugs and locking lugs other than the original
- Hubcaps
- Block heater cord
- Radio code card, code number
- Tools
- Spare keys
- Maintenance log
- Operating manuals
- Damages to installed accessories